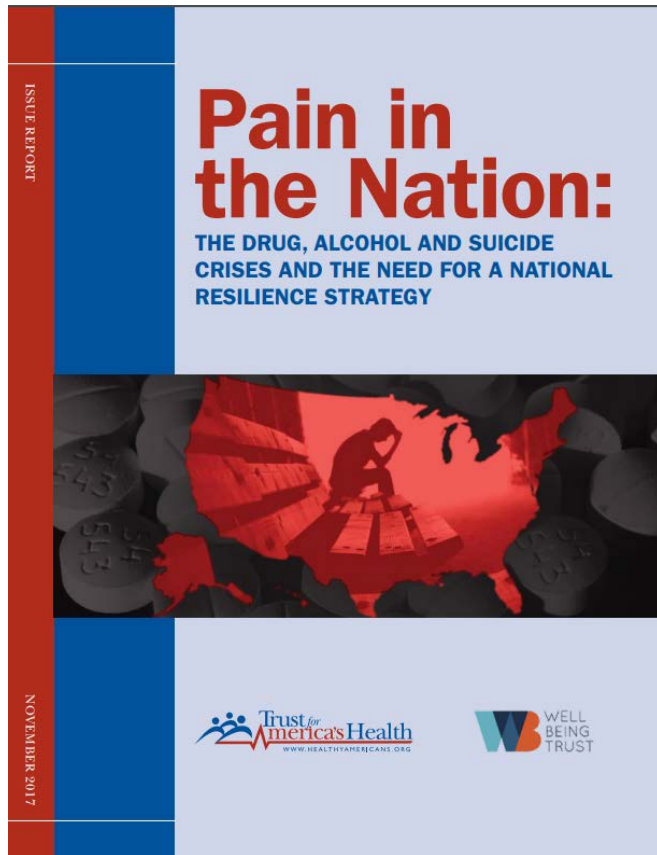


# How the Education Sector Can Help Address the Alcohol, Drug and Suicide Crises

Megan Wolfe, JD  
Policy Development Manager  
Trust for America's Health

June 14, 2018

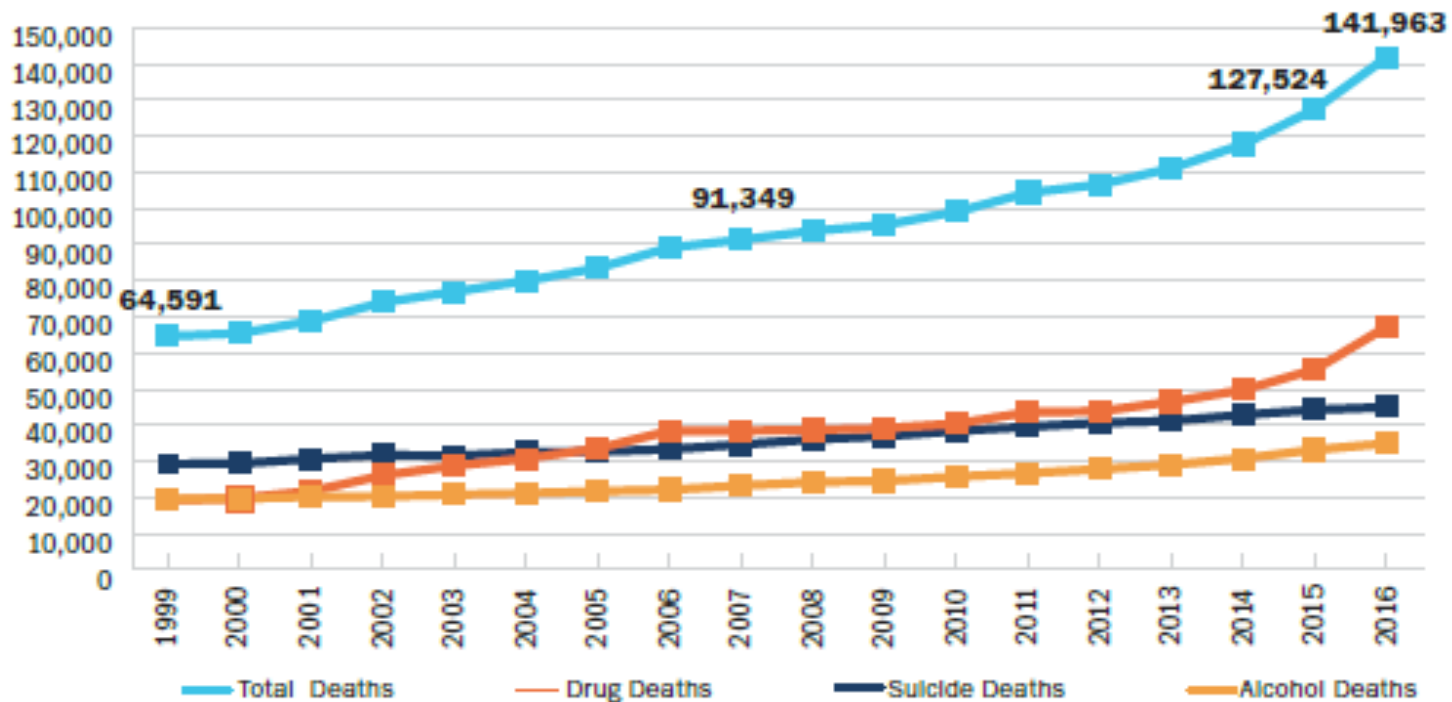
# Pain in the Nation Report



- TFAH & Well Being Trust
- Released Nov. 2017
- Call for National Resilience Strategy
- Education sector brief
- Evidence-based strategies for schools

# Projections

Annual Deaths from Alcohol, Drugs and Suicide, 1999-2016



Source: CDC WONDER

# School-Aged Trends

- Deaths from suicide among children aged 0 to 17 grew 84 percent in the last decade



- As of 2016, more than 1 million adolescents aged 12 to 17 had a substance use disorder

# Impact

- Substance misuse can have long-term adverse effects on

Physical and  
mental health

Academic and  
career  
attainment

Relationships  
with family and  
friends

Community  
Connectedness

# Impact

Ongoing substance misuse:

- ❑ School dropout rates
- ❑ Chronic absenteeism
- ❑ Classroom behavior issues
- ❑ Impaired cognitive development



# Impact

---

*The underlying causes of substance misuse have been shown to contribute to increased likelihood of **poor academic performance, bullying, depression, violence, suicide, unsafe sexual behaviors** and other problems that can emerge during teenage years.*

# National Resilience Strategy

---

“If we can strengthen family and social relationships, improve the social-emotional development of America’s young people, and reduce early childhood trauma in our nation, we can reverse many of the dynamics fueling the rise in despair deaths. Much of this work can be done in our nation’s schools.”



# School-Based Strategies

- ❑ ESSA Framework
- ❑ Community partnerships
- ❑ School climate and culture
- ❑ Screenings for mental and behavioral health concerns
- ❑ Personnel
- ❑ Professional development and training



# ESSA Framework

- State Plans must address conditions for learning
- Title I, II, IV funding flexibility
  - Title I can be used for counseling, mental health, etc.
  - Transferability
  - Rural education
- State accountability and non-academic indicator
- State report card indicators
- Title IV-A SSAEG

# Partnerships

- Systems approach that leverages community-wide protective factors
  - Communities that Care (CTC)
  - Promoting School/community-university Partnerships to Enhance Resilience (PROSPER)
  - Drug Free Communities (DFC)



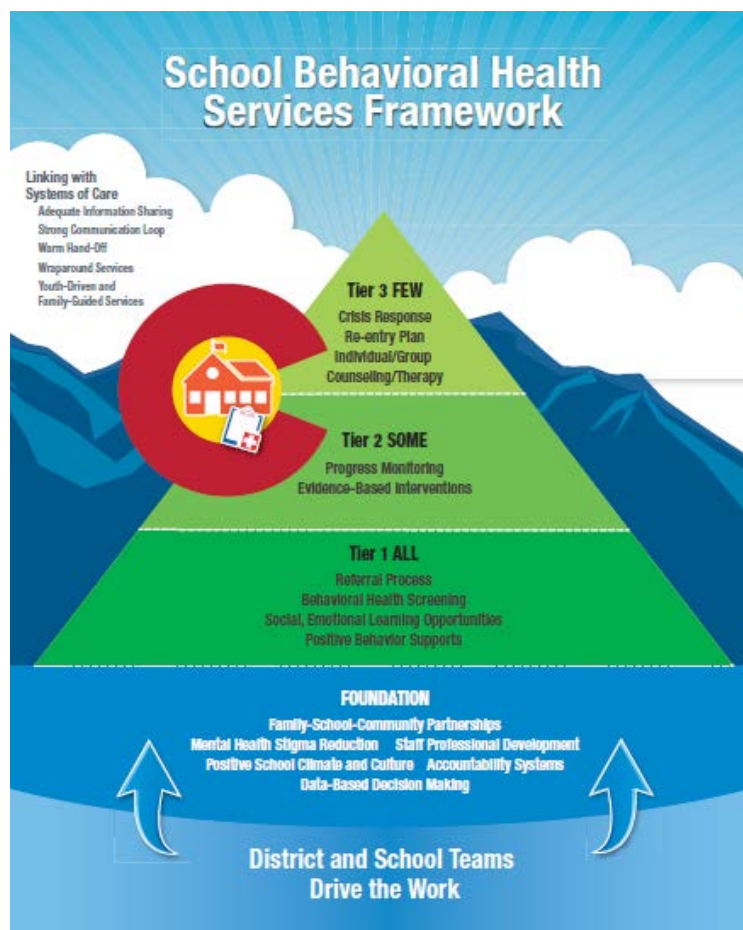
# Partnerships

## Communities that Care

- ❑ Targets predictors of problems
- ❑ Reduced health and behavior problems
- ❑ Reduced substance use
- ❑ Reduced violence



# School Climate and Culture



Multi-tiered systems of support (MTSS)

- Prevention
- Early intervention
- Response
- Treatment

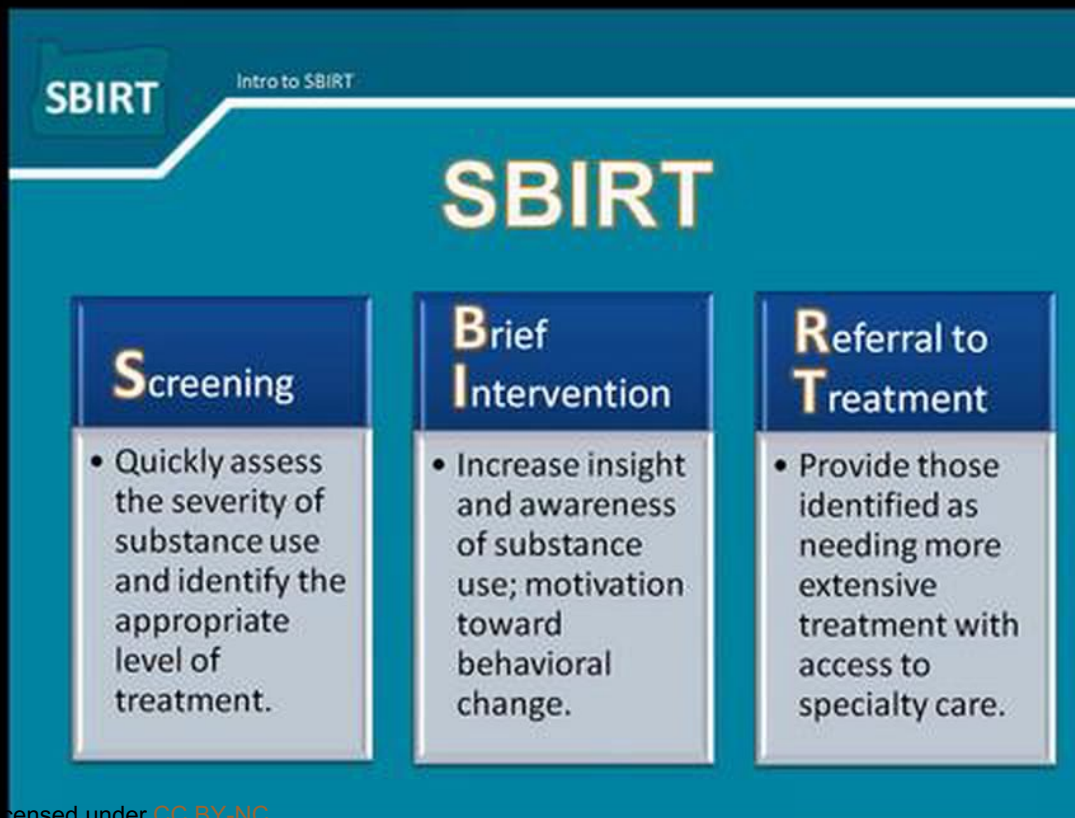
# Key Policies

- Investing in evidence-based social emotional learning, life and coping skill programs

## ESTIMATES OF BENEFITS RELATIVE TO COSTS\*

Evidence-based Approach/Program	Benefits per \$1 of Cost
Nurse-Family-Partnership®	\$1.61
The Incredible Years® – Parent	\$1.65
Strengthening Families 10–14	\$5.00
Early Childhood Education Programs (state and district)	\$5.05
Good Behavior Game	\$64.18
Life Skills® Training	\$17.25

# School-based Screenings



This Photo licensed under [CC BY-NC](https://creativecommons.org/licenses/by-nc/4.0/)



# Personnel

---

- Provide support and intervention
- Consult with families and teachers
- Promote positive peer relationships
- Instruct in problem solving and conflict resolution
- Develop school-wide practices
- Connect and collaborate with community providers



# Professional Development

- Mental Health First Aid (MHFA)
- CDC/DASH funding
- ESSA Titles II and IV
- Postvention
- Trauma-informed care
- Social-emotional learning





**Megan Wolfe, JD**  
Policy Development Manager  
Trust for America's Health  
[mwolfe@tfah.org](mailto:mwolfe@tfah.org)